

# TracXP™

INDUSTRIAL GAS SOLUTIONS  
by Macurco

TracXP is the industrial products division of Macurco Gas Detection, who has been providing gas detection solutions for over 50 years. The TracXP line addresses special hazard applications including harsh industrial environments and hazardous locations with a comprehensive line of wired and wireless gas detection solutions.



## TXP-C64

### 64 Channel Alarm Controller

The TXP-C64 is a multi-channel control panel that provides signal conditioning, simultaneous real-time display and alarm events for up to 64 input channels. The controller modules are designed in 16 channel options allowing the TXP-C64 to be set up as a 16 to 64 channel device to meet a wide variety of applications. The backlit color display enables quick system status indication and notifications of alarm conditions. User selectable display settings offer realtime readings in numerical engineering units, bar graphs and trends. Standard communications include Ethernet with Modbus TCP Master/Slave and web server for configuration and monitoring, and two standard RS-485 serial ports allowing simultaneous Modbus Master/Slave operation. The TXP-C64 provides up to three alarm levels per channel with a "Relay Acknowledge" feature to silence audible alarms during alarm conditions. Minimum, maximum and average data can be logged and easily retrieved via an SD card. The TXP-C64 is user friendly and easily configurable for toxic and combustible critical alarm functions, as well as other 4-20 mA and Modbus® device inputs.



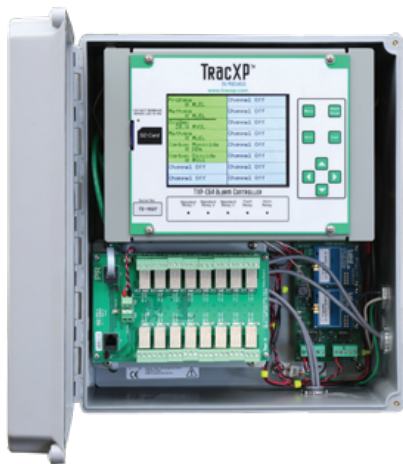
TXP-C64 NEMA-4X

### Key Features

- Certified for Class 1, Div. 2
- NEMA 4X Enclosure
- QVGA backlit color LCD display
- 2 standard SPDT 5A alarm relays for horn & fault, plus 3 programmable alarm relays
- Ethernet port with web server
- Dual RS-485 Modbus® serial ports
- Magnetic key-pad allows non-intrusive operation
- Cal mode allows zero/span calibration for direct sensor input applications
- Security functions to lock out unauthorized users
- Easily expandable for changing needs

### Applications

- Oil & Gas
- Pipeline compression
- Refining & chemical production
- Water / wastewater treatment plants
- Food & beverage facilities
- Metal manufacturing
- Pulp & paper
- Power generation
- General industry

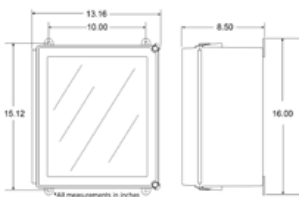


TXP-C64 NEMA-4X  
Open View

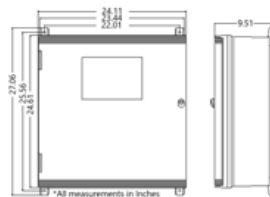
## Specifications

### Controller Specifications

Housing Dimensions	27.6"(L) x 24.11"(W) x 9.51"(H) Fiberglass 16"(L) x 13.16"(W) x 8.5"(H) Compact Fiberglass
Shipping Weight	72 lbs Fiberglass 32 lbs Compact Fiberglass
Power Supply	120 - 240 VAC / 10 - 30 VDC, 600 watt primary power supply
Modbus Inputs	Dual Modbus Master/Slave RS-485 ports
Ethernet Port	Modbus TCP interface port with web server
Analog Inputs	4-20 mA inputs (16, 32, 48 or 64) (Optional)
Analog Outputs	4-20 mA outputs (16, 32, 48 or 64) (Optional)
Relays	Five 5A 30 VDC or 250 VAC resistive Form C (2 standard SPDT 5A alarm relays for horn & fault, plus 3 programmable alarm relays)  Discrete Relay Option Board (16) 5A 30 VDC or 250 VAC resistive Form C (Optional)  Programmable Alarm Relay Board (16), 5A Form C Relays (Optional)
Display	Color QVGA 320 x 240 pixel graphic LCD with backlight displays bar graphs, trends and engineering units.  Five discrete LEDs indicate alarm status for five standard alarm relays
Temperature Range	-13°F to +140°F (-25°C to +60°C)
Approvals	CSA C22.2 No. 1010.1 and C22.2 No. 152 for combustible and ISA S82.02  UL 1604 / C22.2 No. 213 (NEMA 4X = Class 1 Div. 2 Groups A, B, C, D)  EN55011 and EN61000



NEMA 4X Fiberglass Compact Enclosure



NEMA 4X Fiberglass Large Enclosure

Represented By:



Since 1972 Macurco has been providing gas detection solutions for various applications. Macurco provides the highest quality gas detection solutions to customers worldwide.

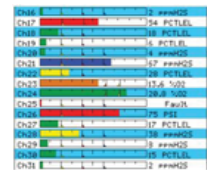


## Controller Options

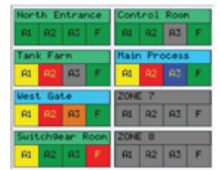
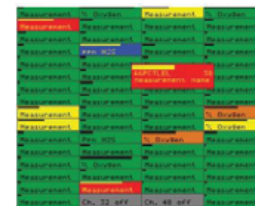
Part Number	Description
88-7000-0030-00	Programmable Alarm Relay Board (16, 5A Form C Relays)
88-7000-0020-00	Discrete Alarm Relay Board (16, 5A Form C Relays)
88-7000-0010-00	Auxiliary Standard Alarm Relay Board (2 standard relays for horn & fault, 3 programmable relays)
88-7000-0070-00	Analog 4-20 mA Output Board (16 Outputs)
88-7000-0300-00	Analog 4-20 mA Input Board (16 Inputs)
88-700R-0000-00	NEMA 4X Expansion Kit (Adds Up To 5 Option Positions)
88-730U-0000-00	NEMA 4X Expansion Enclosure (Adds Up To 10 Option Positions)
88-7040-0000-00	100 - 240 VAC Universal Input 600 Watt 24 VDC Power Supply (Replacement)

\*For additional options please contact your TracXP representative

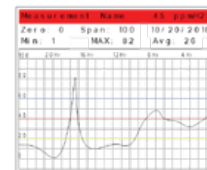
## TXP-C64 Controller Display Screens



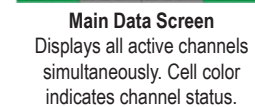
**Bar Graph Screen**  
Displays all active channels. Cell color indicates channel status.



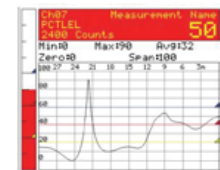
**Zone Screen**  
Displays all 8 possible active zones. Cell color indicates channel status.



**24 Hour Trend Screen**  
Displays channel hour trend (status, Max., Min., Avg. channel ID and units).



**Main Data Screen**  
Displays all active channels simultaneously. Cell color indicates channel status.



**Combination Screen**  
Displays most recent 30-minute trend, bargraph, status, Max., Min., Avg., channel ID and engineering units.

### Macurco Gas Detection

1504 W. 51st St,  
Sioux Falls, SD 57105

Phone: 1-877-367-7891

Website: [www.macurco.com](http://www.macurco.com)

Email: [Macurco\\_info@dwyeromega.com](mailto:Macurco_info@dwyeromega.com)